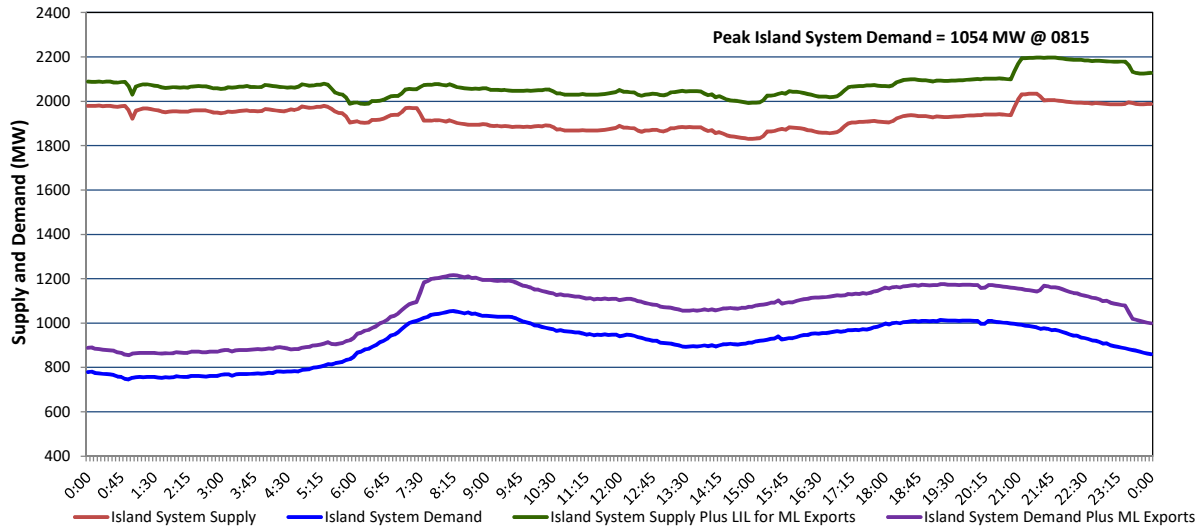


Newfoundland Labrador Hydro (NLH) Supply and Demand Status Report Filed Tuesday, October 29, 2024

Section 1 Island Interconnected System - Supply, Demand & Exports Actual 24 Hour System Performance For Monday, October 28, 2024



Island Supply Notes For October 28, 2024 ¹

- A As of 1011 hours, April 12, 2024, Holyrood Unit 1 unavailable due to planned outage (170 MW).
- B As of 1950 hours, October 18, 2024, Labrador Island Link available at 450 MW due to forced derating (700 MW) - Bipole.
- C As of 0859 hours, October 25, 2024, Hardwoods Gas Turbine unavailable due to planned outage (50 MW).

Section 2 Island Interconnected System - Supply, Demand & Outlook

Tue, Oct 29, 2024	Island System Outlook ²	Seven-Day Forecast	Island System Daily Peak Demand (MW)	
			Forecast ⁸	Adjusted ⁶
Island System Supply: ⁴	1,873 MW	Tuesday, October 29, 2024	1,140	1,090
NLH Island Generation: ^{3,7}	1,475 MW	Wednesday, October 30, 2024	1,090	1,040
NLH Island Power Purchases: ⁵	85 MW	Thursday, October 31, 2024	1,135	1,085
NP and CBPP Owned Generation:	215 MW	Friday, November 1, 2024	950	900
LIL/ML Net Imports to Island: ⁹	98 MW	Saturday, November 2, 2024	1,050	1,000
		Sunday, November 3, 2024	1,145	1,095
7-Day Island Peak Demand Forecast:	1,150 MW	Monday, November 4, 2024	1,150	1,100

Island Supply Notes For October 29, 2024

- Notes:
1. Generation outages for running and corrective maintenance are included. These are not unusual for power system operations. They generally do not impact customer supply. Hydro schedules outages to system equipment whenever possible to coincide with periods when customer demands are low and sufficient supply reserves are available. However, from time to time equipment outages are necessary and reserves may be impacted.
 2. As of 0800 Hours.
 3. Gross continuous unit output.
 4. Gross output from all Island sources (including Note 4).
 5. NLH Island Power Purchases include: ML Imports, Exploits Generation, Rattle Brook, Star Lake, Wind Generation and capacity assistance (when applicable).
 6. Adjusted for interruptible load and the impact of voltage reduction when applicable.
 7. Due to limitations inherent in the design of combustion turbines, the output of combustion turbines may be reduced in the event that ambient temperatures exceed the threshold required for full rated output. This threshold is dependent on the design of each turbine.
 8. Does not include ML Exports.
 9. LIL Import sunk in the Island System. Actual LIL flows will be restricted by various system conditions including, but not limited to, Island Load, ML Exports and Avalon Unit status.

Section 3 Island Peak Demand and Exports Information Previous Day Actual Peak and Current Day Forecast Peak

Mon, Oct 28, 2024	Island Peak Demand ¹⁰	8:15	1,054 MW
	Exports at Peak		162 MW
	LIL Net Imports to Island		4,075 MWh
Tue, Oct 29, 2024	Forecast Island Peak Demand		1,140 MW

- Notes:
10. Island Demand is supplied by NLH generation and purchases, LIL Imports plus generation owned and operated by Newfoundland Power and Corner Brook Pulp & Paper (Deer Lake Power, DLP).